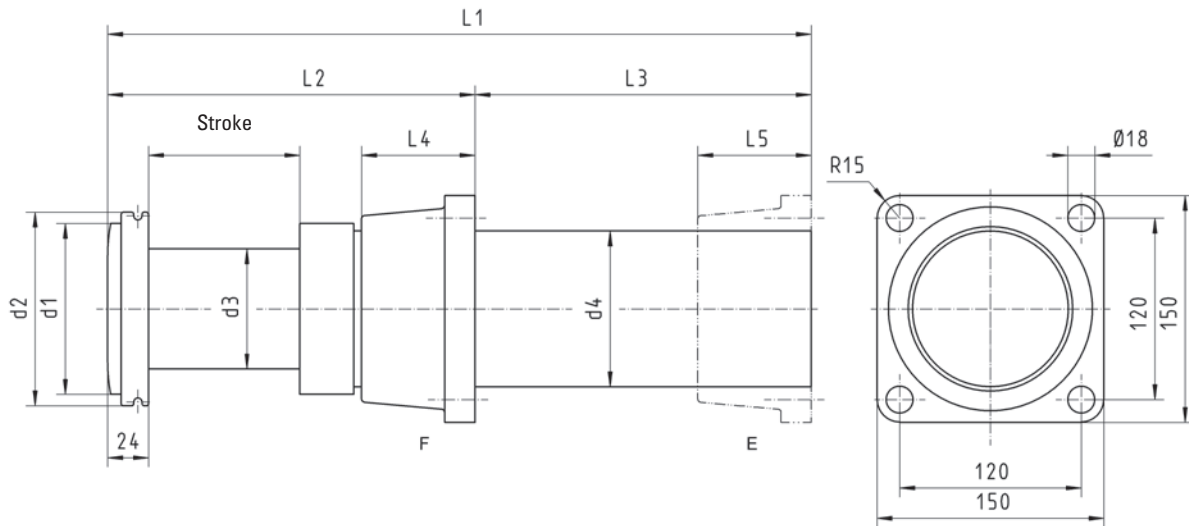


Buffer Type BP 65

Dimensions and technical data



Rev. 11-03



* upon request

F = Front Mounted
E = Back Mounted

All dimensions in mm
Alterations reserved without notice

Stroke mm	Capacity kJ/stroke	End force kN	L1	L2	L3	L4	L5	d1	d2	d3	d4
100	17	200	495	250	245	75	150	93	108	65	85
200	34	200	805	350	455	75	150	93	108	65	85
300	51	200	1100	450	650	75	150	93	108	65	85
400	58	170	1395	580	815	75	150	93	108	65	85
600	77	150	1890	780	1110	75	*	93	108	65	85
800	82	120	2455	980	1475	75	*	93	108	65	85

Stroke mm	Impact Weight and Pin Codes								Weight kg		Restoring Force kN
	up to 5 t	up to 10 t	up to 20 t	up to 40 t	up to 80 t	up to 150 t	up to 300 t	up to 600 t	Execution F	Execution E	
100	102	104	106	108	110	112	114	116	19,2	19,2	10
200	202	204	206	208	210	212	214	216	25,2	25,2	10
300	302	304	306	308	310	312	314	316	31,4	33,7	11
400	402	404	406	408	410	412	414	416	37,3	39,6	12
600	602	604	606	608	610	612	614	616	44,9	*	25
800	802	804	806	808	810	812	814	816	56,3	*	25