

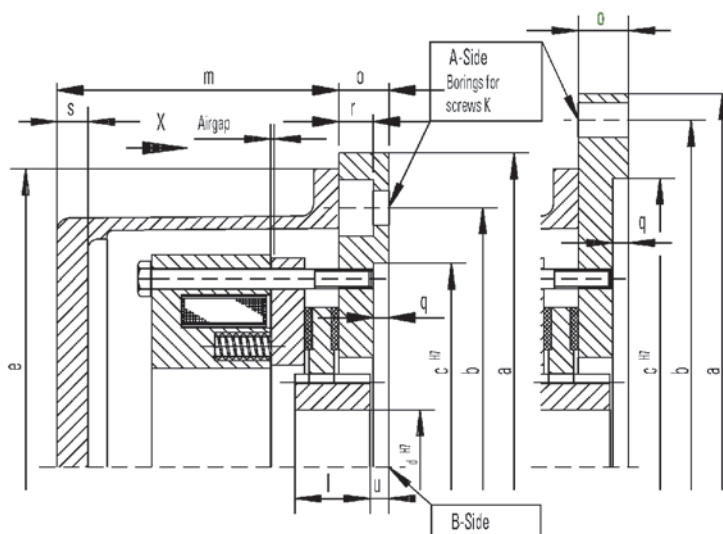
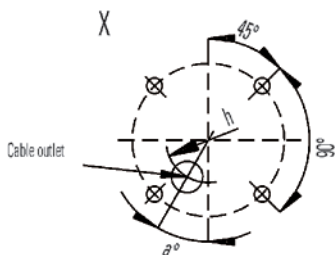
Spring-Set Brake MFB

Electromagnetic Two-Disc Spring-Set Brake



Rev. 05-08

Arrangement of borings for screws K at the standard intermediate flange



Keyways for keys to DIN 6885 T1, width accuracy P9

Brake torque acc. to DIN VDE 0580
Protection IP56

Alterations reserved without notice

Brake size		MFB 1	MFB 2.5	MFB 5	MFB 10	MFB 16				
Brake torque	Nm	10	25	50	100	160				
Moment of inertia	kgm ²	0.000145	0.0005	0.0012	0.0020	0.0048				
Mass (weight)	kg	9	10	15	21	24				
max. speed	min ⁻¹	5500	4500	4000	3500	3000				
Coli. b. 20° C	Nominal voltage	V –	110	110	110	110				
	Nominal power	W	31	52	76	94	125			
	Nominal current	A	0.28	0.47	0.69	0.85	1.14			
Airgap, OFF		norm. mm	0.2	0.2	0.3	0.3				
		max. mm	0.5	0.6	0.8	1.1				
Diameter mm	B-Seite	d Rough boring	10	10	15	15	26			
		d H7 Preferential boring	22	24	24	28				
		d H7 maximal	22	35	45	55	60			
		e	190	190	238	260	300			
Lengths mm	l	20.5	24	26.5	30	40				
	m	81.5	81.5	101.5	111.5	102				
	s	1.5	1.5	1.5	1.5	1.5				
	u	8	6	6	6	6				
A	α °	15	15	15	15	15				
Suitable standard intermediate flange		A200	A200	A250-1	A300	A300-2				
		A250-2	A250	A300-1	A350	A350-1				
		Dimensions of intermediate flanges								
Standard intermediate flange		A200	A250	A250-1	A250-2	A300	A300-1	A300-2	A350	A350-1
Diameter mm	a	200	250	250	250	300	300	300	350	350
	b	165	215	215	215	265	265	265	300	300
	c H7	130	180	180	180	230	230	230	250	250
	h	114	144	162	114	200	170	208	200	208
Lengths mm	o	16	18	18	18	18	18	18	20	22
	q	5	5	5	5	5	5	5	6	6
	r	11		13		13		13		17.5
	Screws	k	4xM10	4xM12	4xM112	4xM12	4xM12	4xM12	4xM16	4xM16

