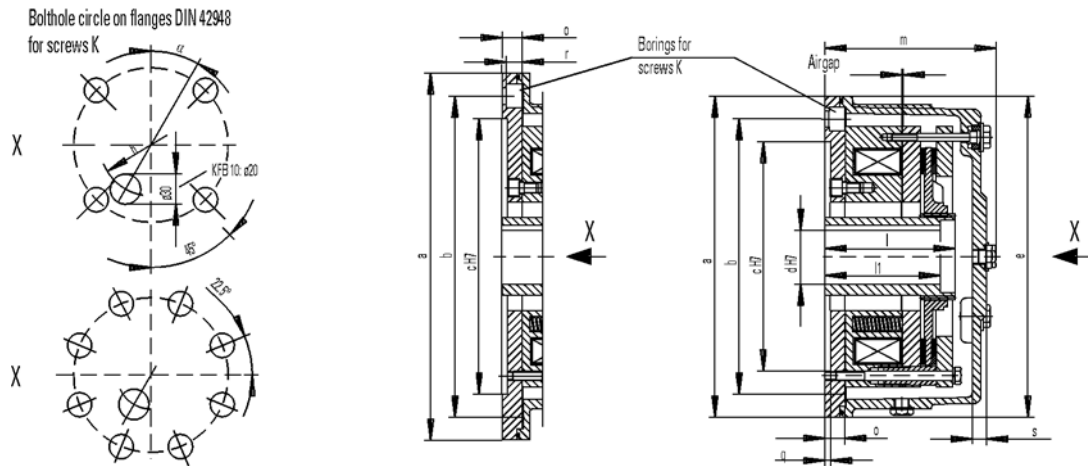


Spring Set Brake KFB

Electromagnetic Two Disc, Spring Set Brake



Rev. 10-09



* The larger dimension belongs to the larger assigned brake.

Alterations reserved without notice.

Brake size		KFB 5	KFB 10	KFB 16	KFB 25	KFB 30	KFB 40	KFB 63	KFB 100	KFB 160	
Brake torque M2 dynamic acc. to DIN VDE 0580	Nm	50	100	160	250	300	400	630	1000	1600	
Mass moment of inertia	kgm ²	0.0010	0.0017	0.0037	0.0048	0.0055	0.0068	0.0175	0.036	0.050	
Mass (weight)	kg	13	19	28	42	50	55	74	106	168	
max. speed	min ⁻¹	6000	6000	6000	6000	6000	5500	4700	4000	3600	
Coil b. 20°C	Nominal voltage	110	110	110	110	110	110	110	110	110	
	Nominal power	79	93	128	158	133	196	220	307	344	
	Nominal current	0.72	0.84	1.16	1.44	1.2	1.78	2.0	2.79	3.13	
Air gap, OFF	norm. mm	0.3	0.3	0.3	0.3	0.3	0.3	0.4	0.4	0.4	
	max. mm	0.8	1.0	1.0	1.2	0.8	1.2	1.3	1.6	1.8	
Diameter mm	B-Side	d pilot bore	8	26	26	36	26	36	36	36	36
		d ^{H7} preferential bore	15	28	28	38	32	38	48	60	60
			20	32	32	42	38	42	55	65	65
			25	38	38	48	42	48	60	75	75
						55	45	55			
Length mm	e	160/200	200/250	253/303	300/350	250/300	303/350	350/400	400/450	450/550	
	f										
	h	93	106	144	194	144	194	214	264	314	
	l	110	110	96	117	137	117	142	148	155	
	l ¹	110	110	96	117	137	117	142	142	142	
	m	145	154	141	165	175	175	187	196	218	
	s	13	15	15	15	15	15	15	15	17	
A	α°	22.5	30	30	30	67.5	30	30	30	30	
Suitable standards flanges		A160	A200	A250	A300	A250	A300	A350	A400	A450	
		A200	A250	A300	A350	A300	A350	A400	A450	A550	
		Dimensions of standards flanges									
Size of standards flanges		A160	A200	A250	A300	A350	A400	A450	A550		
Diameter mm	a	160	200	250	300	350	400	450	550		
	b	130	165	215	265	300	350	400	500		
	c ^{H7}	110	130	180	230	250	300	350	450		
Length mm	o	18	18	18/20*	20/22*	22	22/24*	24/29*	24/29*		
	q	5	5	5	5	6	6	6	6		
	r	11	11	13	13	17.5	17.5	17.5	17.5		
Screws	k	4xM8	4xM10	4xM12	4xM12	4xM16	4xM16	8xM16	8xM16		