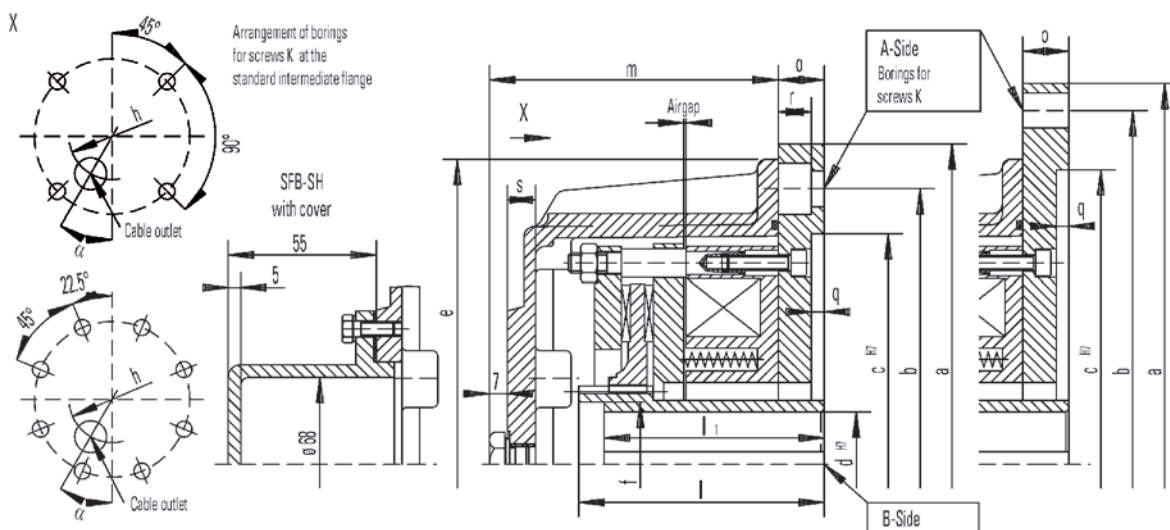


Spring-Set Brake SFB-SH

Electromagnetic Two-Disc Spring-Set Brake
Increased brake-torque



Rev. 05-08



Brake size		SFB 400-SH	SFB 630-SH	SFB 1000-SH	
Brake torque M2 dynamic acc. to DIN VDE 0580	Nm	5200	8000	13000	
		4800	7500		
		4400	6900		
Mass moment of inertia	kgm ²	0.325	0.375	1.007	
Mass (weight)	kg	357	500	750	
max. speed	min ⁻¹	2500	2200	2000	
Spule b. 20° C	Nominal voltage	V DC	110	110	110
	Nominal power	W	553	671	980
	Nominal current	A	5.03	6.10	8.91
Airgap, brake OFF		min. mm	0.4	0.7	0.7
		max. mm	2.5	2.8	3.1
Diameter mm	B-Side	d Rough boring	46	58	68
		d ^{H7} Preferential boring	65	100	125
			70		
			75		
			80		
			90		
d ^{H7} maximal	110	125	140		
Lengths mm	e	660	700	795	
	f	128	140	155	
	h	520	570	620	
	l	191	237	282	
	l ¹	171	210	255	
	m	272	310	360	
	s	15	15	15	
A	α°	30	30	30	
Suitable standard intermediate flange		A660-1	A800	A800-1	
		A800			
		Dimensions of standard intermediate flange			
Standard intermediate flange		A660-1	A800	A800-1	
Durchmesser mm	a	600	800	800	
	b	600	740	740	
	c ^{H7}	550	680	680	
Länge mm	o	30	30	30	
	q	7	7	7	
	r	21.5		21.5	
	Screws k	8xM20	8xM20	8xM20	

Keyways for keys acc. to DIN6885 Bl.1,
width accuracy P9. Protection IP67

Alterations reserved without notice