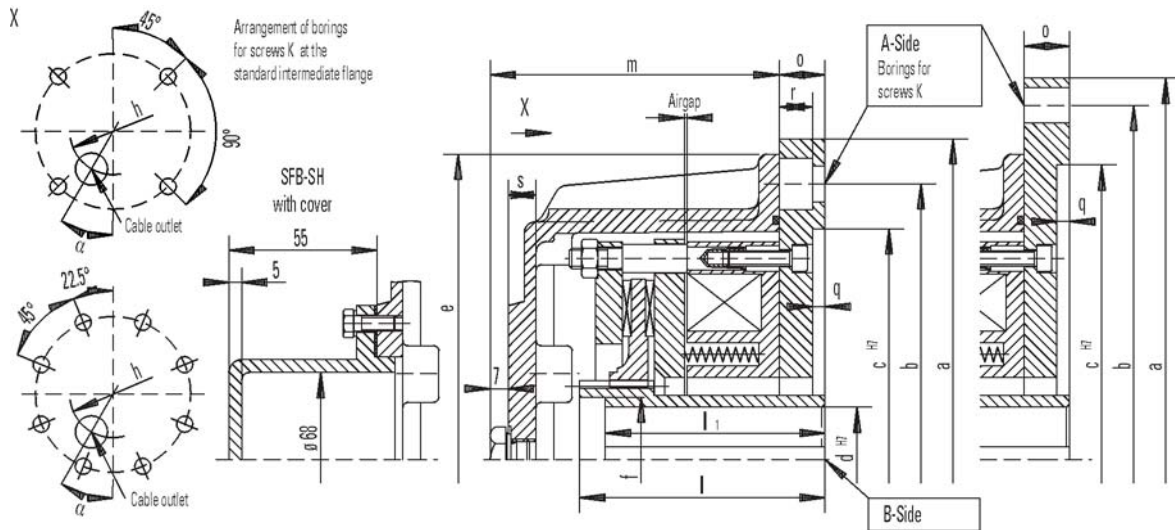


Spring Set Brake SFB-SH

Electromagnetic Two Disc, Spring Set Brake
Increased brake torque



Rev. 05-08



Keyways for keys acc. to DIN6885 Bl.1, width accuracy P9. Protection IP67

Alterations reserved without notice

Brake size		SFB 6.3-SH	SFB 10-SH	SFB 16-SH	SFB 25-SH	SFB 40-SH	SFB 63-SH	SFB 100-SH	SFB 160-SH	SFB 250-SH			
Brake torque M2 dynamic acc. to DIN VDE 0580	Nm	80	130	210	350	550	800	1300	2100	3300			
		75	120	190	310	490	750	1200	1900	3000			
		69	110	180	275	440	690	1100	1750	2750			
Mass moment of inertia	kgm ²	0.0017	0.0037	0.0048	0.0068	0.0175	0.036	0.050	0.128	0.140			
Mass (weight)	kg	19	28	42	55	74	106	168	242	306			
max. speed	min ⁻¹	6000	6000	6000	5500	4700	4000	3600	3200	2800			
Coil b. 20 °C	Nominal voltage	V DC	110	110	110	110	110	110	110	110			
	Nominal power	W	99	128	158	196	220	307	344	435			
	Nominal current	A	0.90	1.16	1.44	1.78	2.0	2.79	3.13	3.95			
Air gap, brake OFF	min. mm	0.3	0.3	0.3	0.4	0.4	0.4	0.6	0.4	0.4			
	max. mm	0.9	1.2	1.2	1.3	1.4	1.8	1.8	2.3	2.5			
Diameter mm	B-Side	d Rough boring	26	26	36	36	36	36	36	46	46		
		d ^{H7} Preferential boring	28	28	38	38	48	60	60	65	65		
			32	32	42	42	55	65	65	70	70		
			38	38	48	48	60	75	75	75	75		
		d ^{H7} maximal	40	40	55	55	60	75	75	90	90		
Length mm	e	238	260	280	318	400	440	446	540	556			
	f						95	95	128	128			
	h	150	180	202	214	244	292	330	394	440			
	l	96	96	117	117	142	148	148	191	191			
	l ¹	96	96	117	117	142	142	142	171	171			
	m	115	118	137	143	169	171	183	211	232			
A	α °	15	15	30	22.5	30	30	30	30	45			
Suitable standard intermediate flange		A250	A300	A300-1	A350	A400-1	A450-1	A450-1	A550-1	A660			
		A300	A350	A350	A400	A450	A550	A550	A660	A800			
				A400	A450	A550	A660	A660	A800				
				A450									
Dimensions of standard intermediate flange													
Standard intermediate flange		A250	A300	A300-1	A350	A400	A400-1	A450	A450-1	A550	A550-1	A660	A800
Diameter mm	a	250	300	300	350	400	400	450	450	550	550	660	800
	b	215	265	265	300	350	350	400	400	500	500	600	740
	c ^{H7}	180	230	230	250	300	300	350	350	450	450	550	680
Length mm	o	18	18	18	20	22	22	24	24	24	24	30	30
	q	5	5	5	6	6	6	6	6	6	6	7	7
	r	13		13			17.5		17.5		17.5		
Screws k		4xM12	4xM12	4xM12	4xM16	4xM16	4xM16	8xM16	8xM16	8xM16	8xM16	8xM20	8xM20