

# Rail Brake Type BSB



**PINTSCH BUBENZER**  
is certified according to  
DIN EN ISO 9001:2008



**Tried and Trusted**



**High Performance**



**Reliable – Long Life  
Spring Package**



**Easy Maintenance**



**No Rail Channel  
Required**

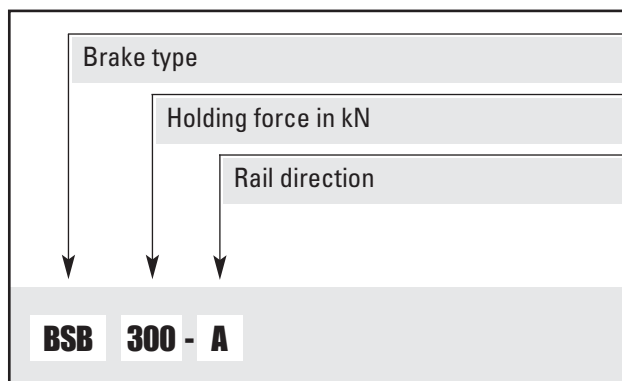
# Description BSB



## Main Features

- Rail brake spring applied
- Apply time: Continuously adjustable 3-12 seconds
- Rail brake hydraulically released by **external** release cylinders
- Limit switch release control, mechanical or proximity type
- Connection by flange on top
- Static applications
- Holding forces 100-300 kN
- Vertical compensation  $\pm 10$  mm

## Ordering Example



## Options

- Operation of several rail brakes by one hydraulic power unit, including hand pump for emergency release
- Stainless steel enclosures for power unit and terminal box
- Space heater, oil level and oil temperature switch for the power unit
- Complete piping set, if required, in stainless steel

## Applications

- As storm brake on all rail mounted equipment, e. g. cranes, stackers, reclaimers etc. Particularly when the rail is mounted above dock level or a rail channel is provided

## Operating Restrictions

- Brakes of this range are tested both mechanically and hydraulically and are set to nominal force. This setting can only be changed by the manufacturer. Operating conditions other than described in this brochure require the manufacturer's approval and may influence the function of the brake and its components



### Please Note

We supply a detailed operating manual with every order. Nevertheless, we would point out that wheel brakes are only as safe as the servicing and maintenance performed while they are in operation.



### PINTSCH BUBENZER Service

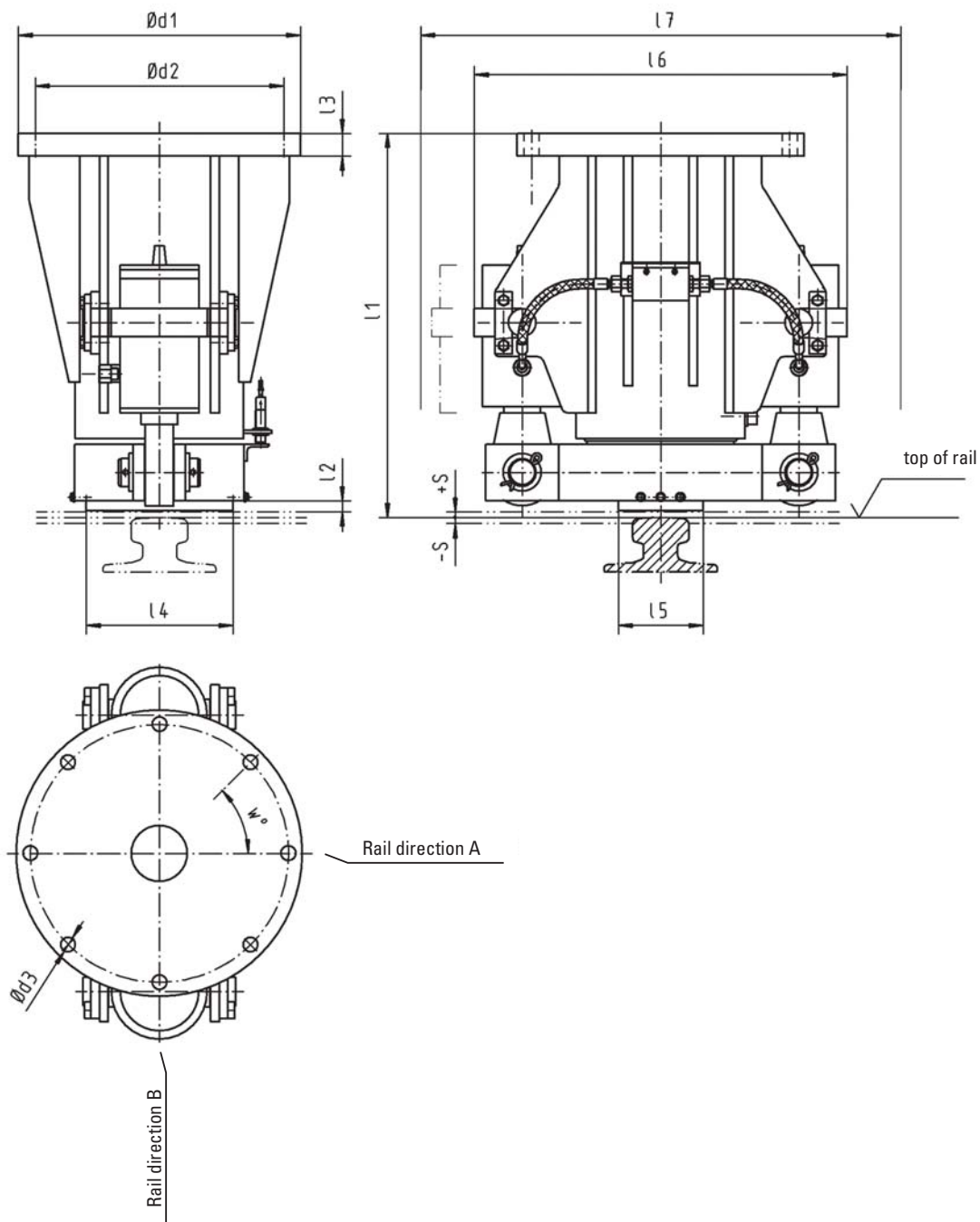
This includes the installation and commissioning on-site by PINTSCH BUBENZER service engineers, if required. Drawings as DWG/DXF files for your engineering department are available upon request.

# Rail Brake BSB

Dimensions and technical data



Rev. 11-03



Rail direction to be indicated.  
Vertical compensation S: 10 mm

All dimensions in mm  
Alterations reserved without notice

Type	Holding force	d1	d2	d3	l1	l2	l3	l4	l5	l6	l7	W°
BSB 100	100 kN	508	457	27	576	20	40	260	150	660	850	45
BSB 150	150 kN	508	457	27	576	20	40	260	150	660	850	45
BSB 200	200 kN	520	457	31	710	16	40	260	150	660	850	30
BSB 250	250 kN	600	530	37	950	10	40	300	150	855	1060	22,5
BSB 300	300 kN	600	530	37	950	10	40	300	150	855	1060	22,5

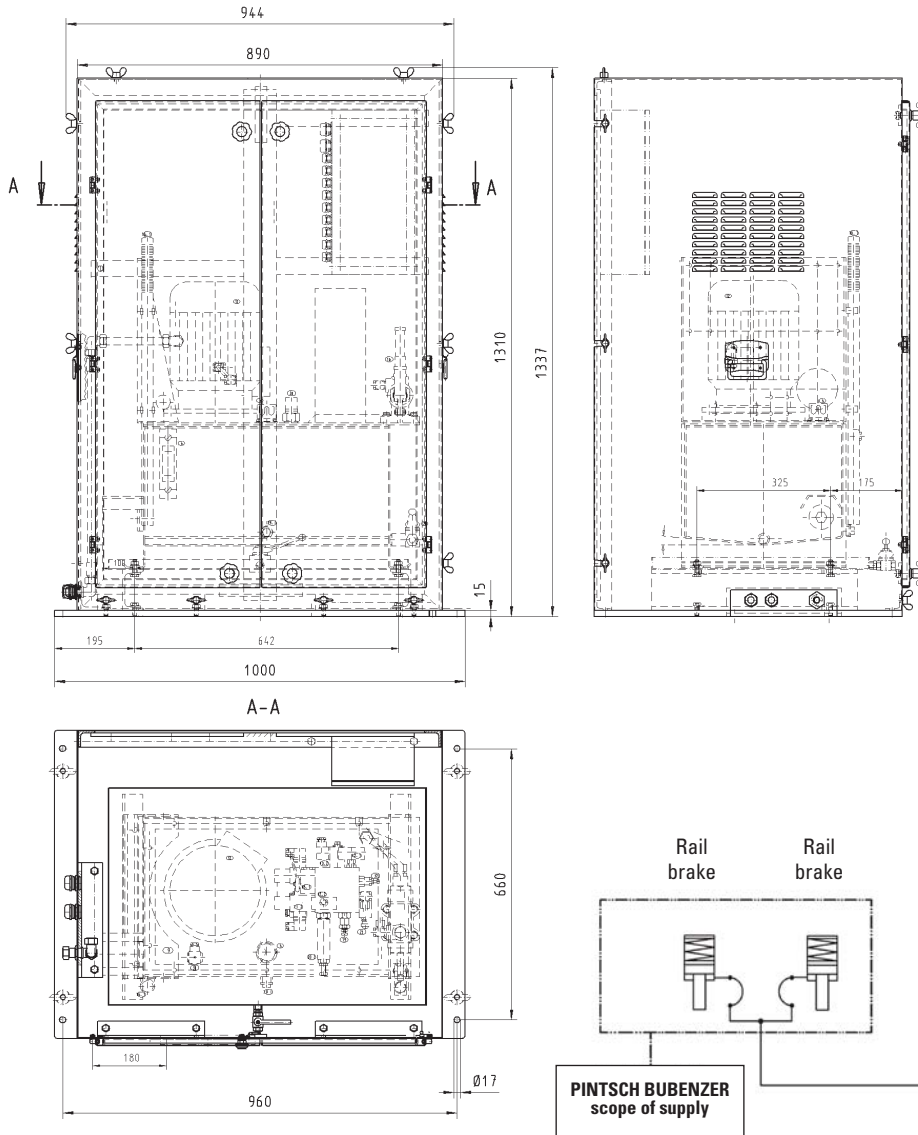
# Rail Brake BSB

Hydraulic power unit for one or more brakes

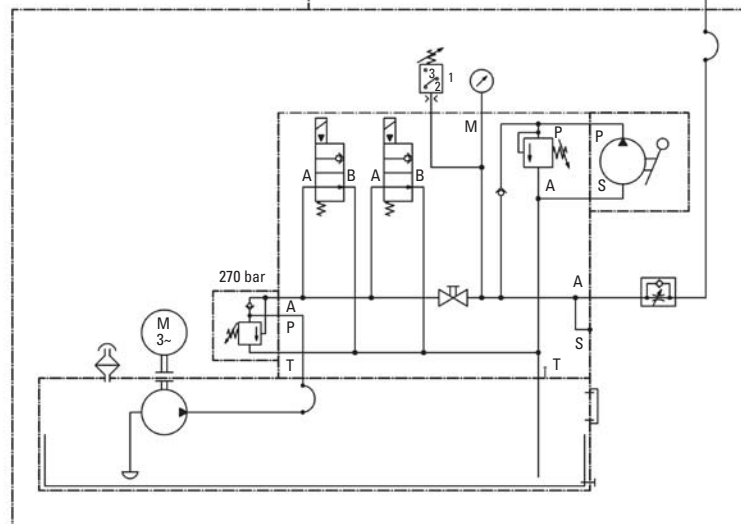


Rev. 12-06

Type example



Motor:	4 kW
Pump:	11,2 l/min
Max. pressure:	270 bar
Oil tank:	40 l
Hand pump:	incl.
Pressure switch:	incl.



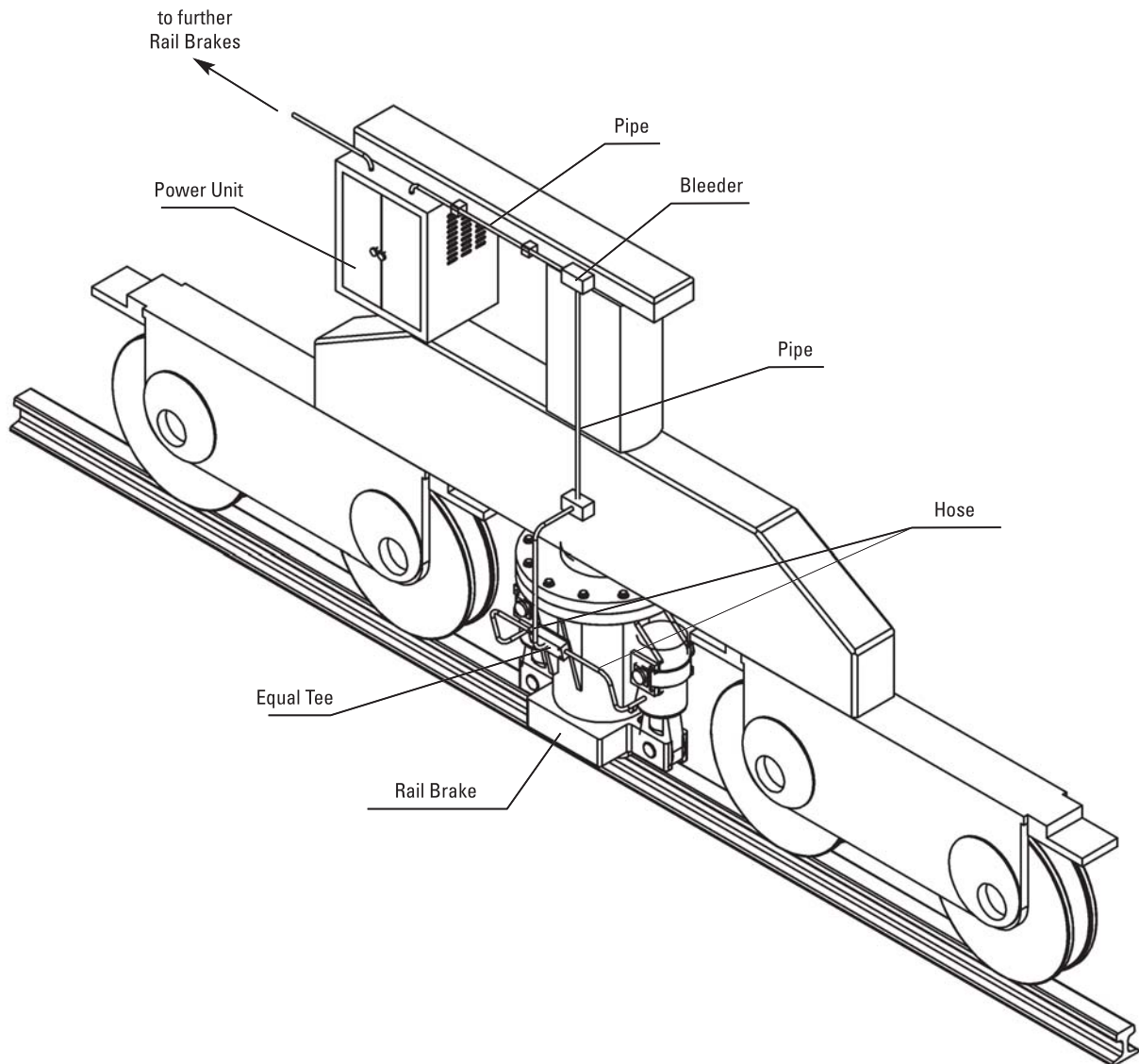
All dimensions in mm  
Alterations reserved without notice

# Piping Sample

Rail Brake BSB



Rev. 09-02



Attention: For operating two or more brake units with one power unit please note, that the power unit should be installed between the brakes in the centre to achieve almost equal pipe length on both sides (equal apply time of brakes).