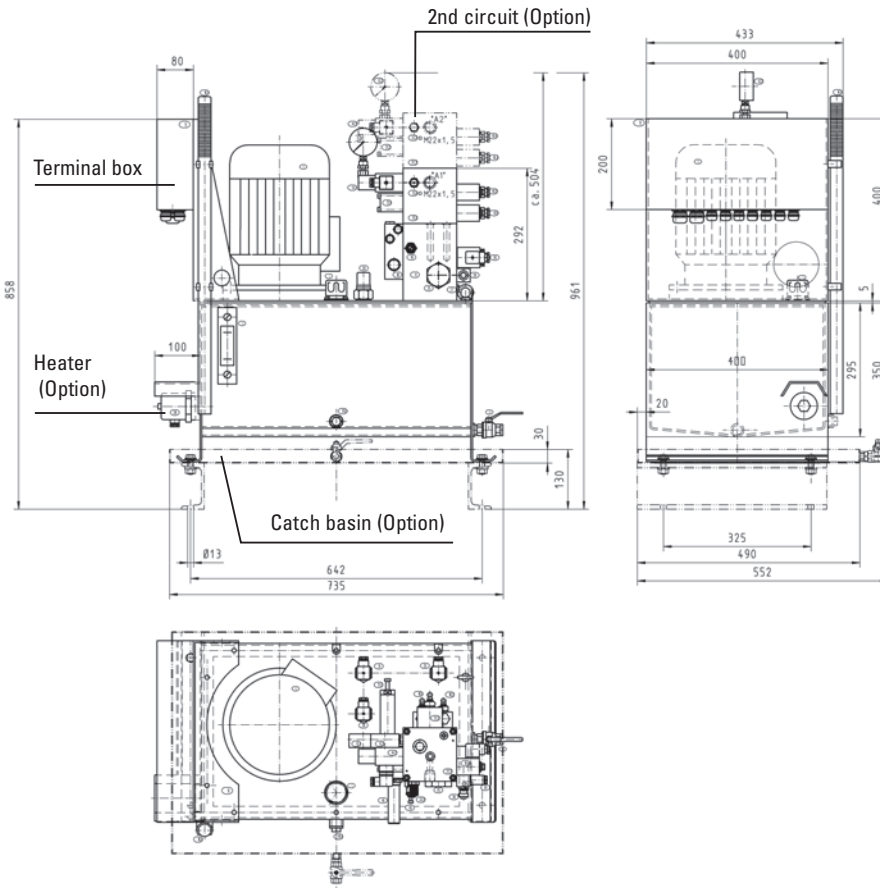


Disc Brake SF

Hydraulic power unit for one or more calipers



Rev. 12-06



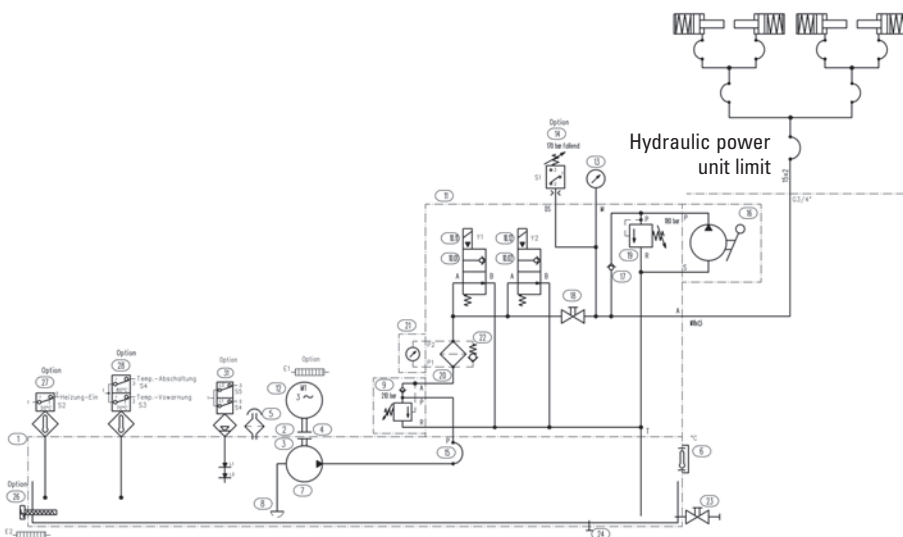
Example:	
Standard configuration	
up to 4	SF10/SF15
up to 2	SF24
Motor:	3 kW
Pump:	7,9 l/min
Pressure:	210 bar
Tank:	40 l
Weight:	85 kg

The flow diagram shows the general arrangement of the hydraulic power unit, including handpump for emergency manual release of the brakes.

The two solenoid valves are switched in parallel (redundancy). After the nominal pressure is reached, the idler valve switches into idle running. The motor is continuously energized.

Pressure switch, temperature switch, heaters, level switch, stainless steel version and other accessories are available options.

Hydraulic power units are also available as two-circuit power units, e.g. to operate main hoist and boom hoist brakes with one power unit only.



All dimensions in mm
Alterations reserved without notice



With every order we supply a complete hydraulic and electric diagram according to the order specification.