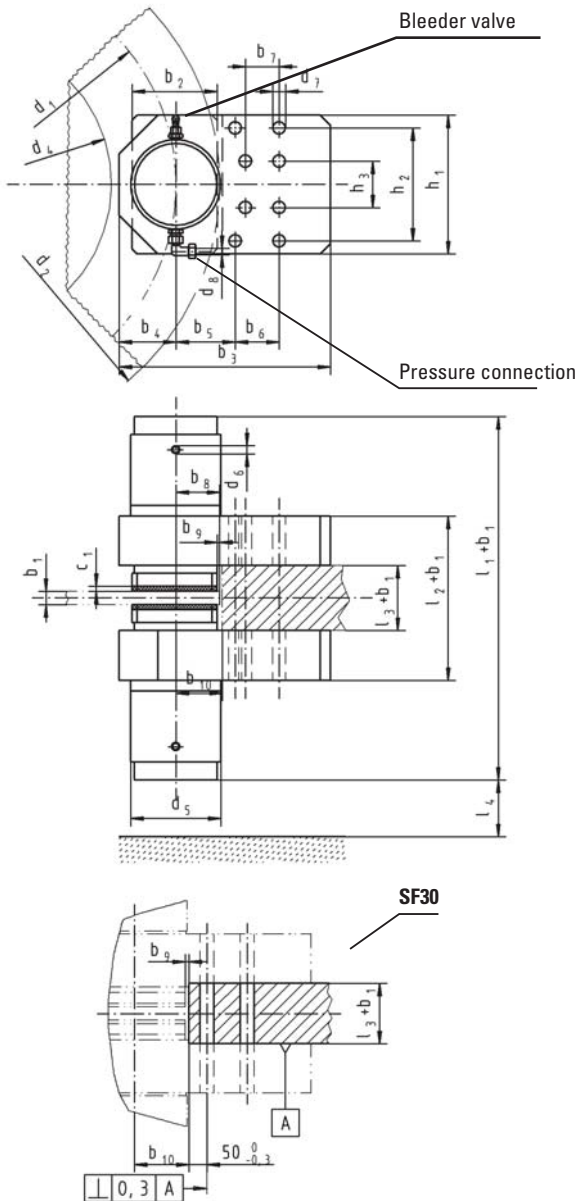


# Disc Brake SF

Dimensions and technical data



Rev. 12-06

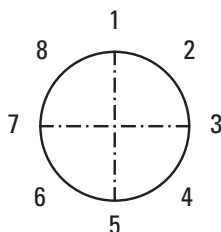


Type SF	10	15	24	30	40
b <sub>2</sub>	165	165	195	280	300
b <sub>3</sub>	410	410	480	640	720
b <sub>4</sub>	110	110	130	155	175
b <sub>5</sub>	115	115	130	200	220
b <sub>6</sub>	85	85	100	110	125
b <sub>7</sub>	60	60	70	110	125
b <sub>8</sub>	85	85	100	140	160
b <sub>9</sub>	5	5	5	5	10
b <sub>10</sub>	90	90	105	150	170
c <sub>1</sub>	10	10	10	10	10
d <sub>5</sub>	175	175	225	290	310
d <sub>6</sub>	3/8"	3/8"	3/8"	3/8"	3/8"
d <sub>7</sub>	25	25	31	38	50
d <sub>8</sub>	12	12	12	12	12
h <sub>1</sub>	270	270	300	400	480
h <sub>2</sub>	220	220	230	300	375
h <sub>3</sub>	90	90	70	100	125
l <sub>1</sub>	650	690	810	940	981
l <sub>2</sub>	292	292	342	402	502
l <sub>3</sub>	100	100	110	130	110
l <sub>4min</sub>	40	110	130	180	200
Bolt ø	M24	M24	M30	M36	M48
Bolt material	10.9	10.9	10.9	10.9	10.9
Tighten. torque, Nm	1050	1050	2100	3500	6400
Contact force F <sub>A</sub> kN	100	150	240	300	400
Op. pressure bar	140	180	180	210	210
Max. pressure bar	200	200	200	240	240
Release stroke mm	2	2	2	2	2
Oil volume l	0,023	0,023	0,035	0,050	0,052
Pad surface cm <sup>2</sup>	427	427	570	1050	1360
Theor. friction μ*	0,40	0,40	0,40	0,40	0,40
Weight (kg)	200	210	368	760	1180

Data per caliper half

\*) Average friction factor of standard material combination  
All dimensions in mm. Alterations reserved without notice.

**Brake torque M<sub>Br</sub> in Nm = F<sub>A</sub> (kN) x μ x d<sub>1</sub> (mm)**



Please indicate required mounting position.

### Brake disc data

	SF10	SF15	SF24	SF30	SF40
d <sub>1</sub> =	d <sub>2</sub> -170 mm	d <sub>2</sub> -170 mm	d <sub>2</sub> -200 mm	d <sub>2</sub> -290 mm	d <sub>2</sub> -320 mm
d <sub>4</sub> =	d <sub>2</sub> -420 mm	d <sub>2</sub> -420 mm	d <sub>2</sub> -490 mm	d <sub>2</sub> -620 mm	d <sub>2</sub> -700 mm

d<sub>2</sub> = Brake disc diameter in mm  
d<sub>1</sub> = Friction diameter in mm  
d<sub>4</sub> = Max. permissible drum or hub diameter in mm  
b<sub>1</sub> = Disc thickness in mm (min. 30)